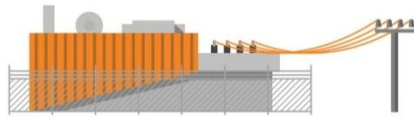
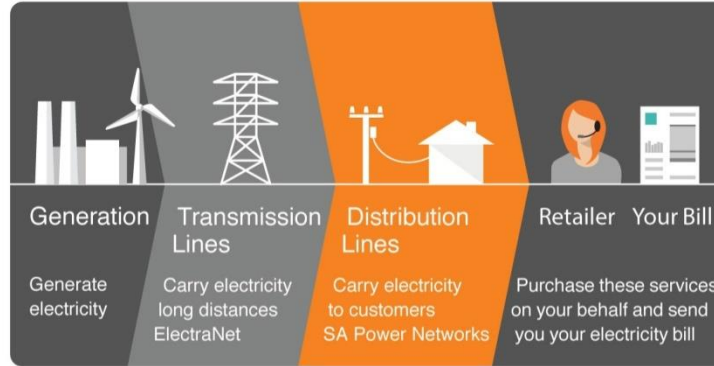




Getting Critical Safety and Operational Information to the Worker in a Real Time, Easy to Understand Format

Grant Roach
SA Power Networks

Chris Manser
Marops Limited



400
zone substations



73,000
street transformers



720,000
stobie poles

200,000km
of wires

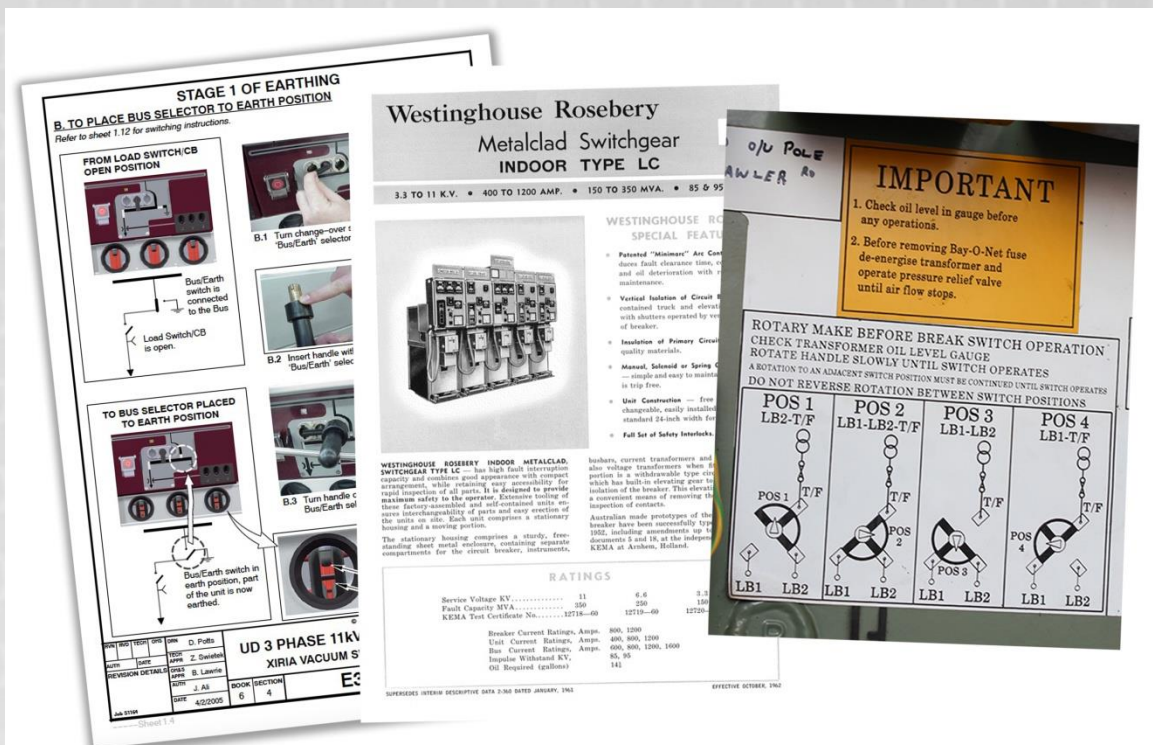


Covering
178,000km²



Keeping Safe

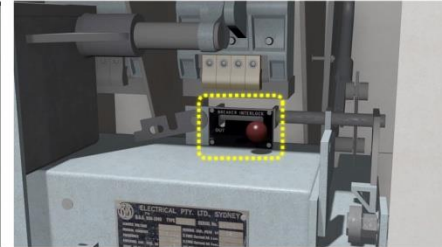
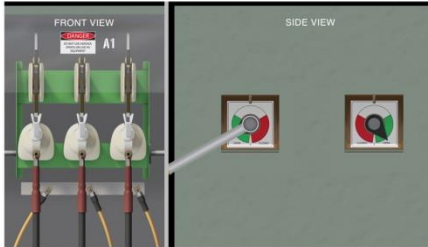
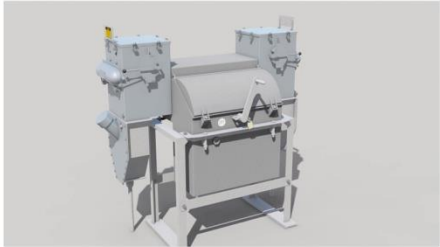
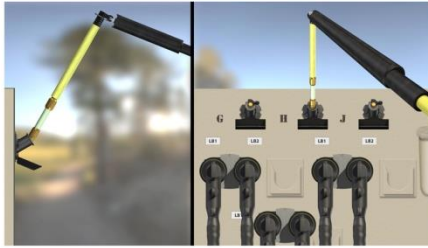
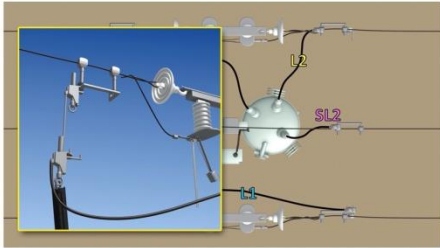




Operator's Handbook

Manufacturer's Manuals

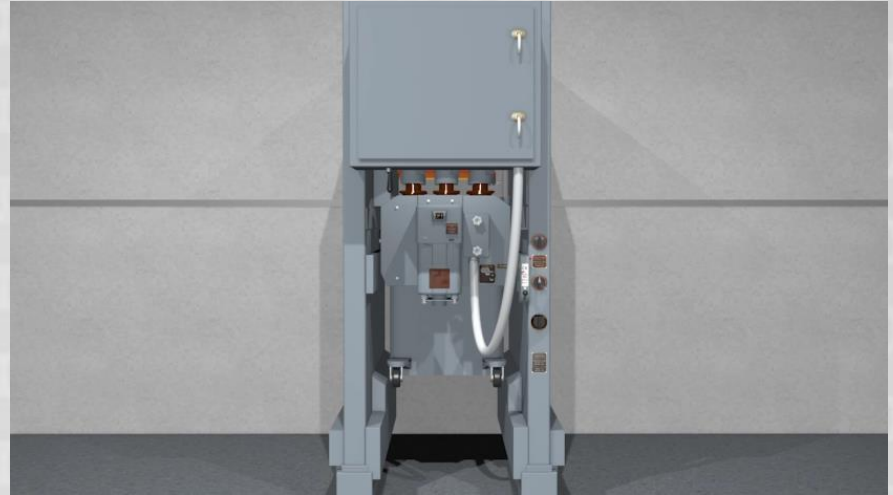
Quick Reference Guides



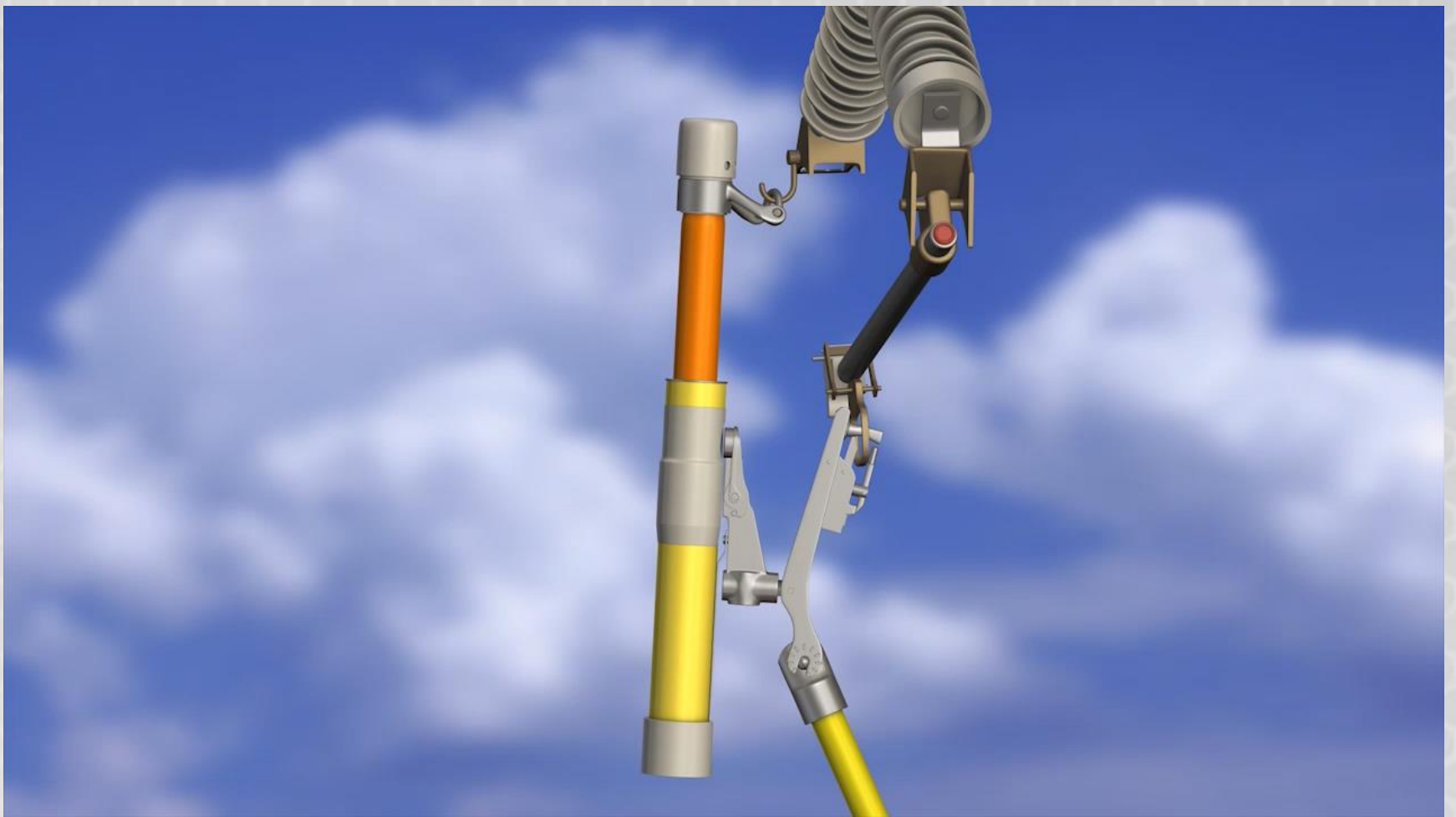
Using 3D animation marops



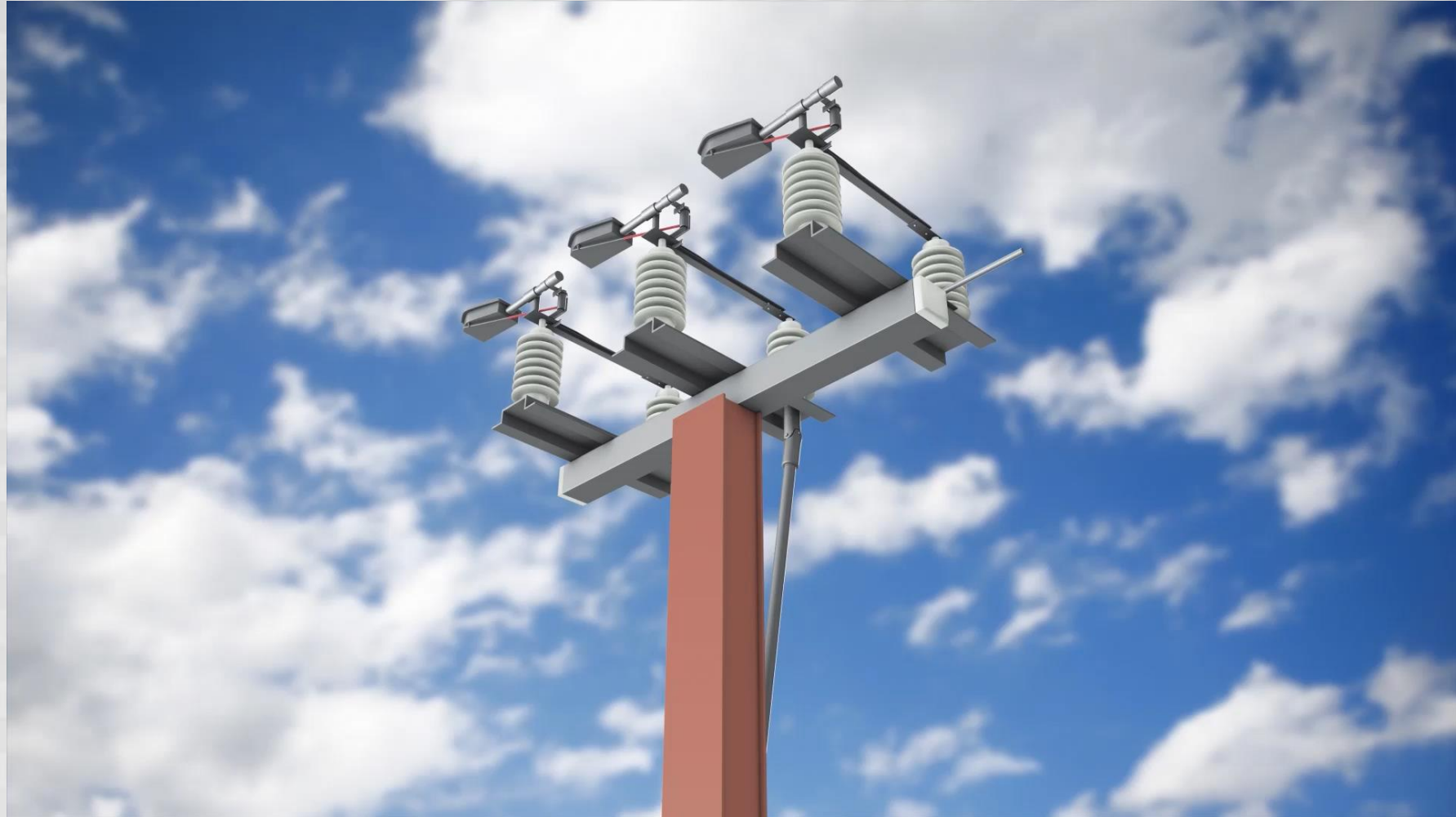
Clip from Information gathering phase



Clip from one of 4 final movies for this product



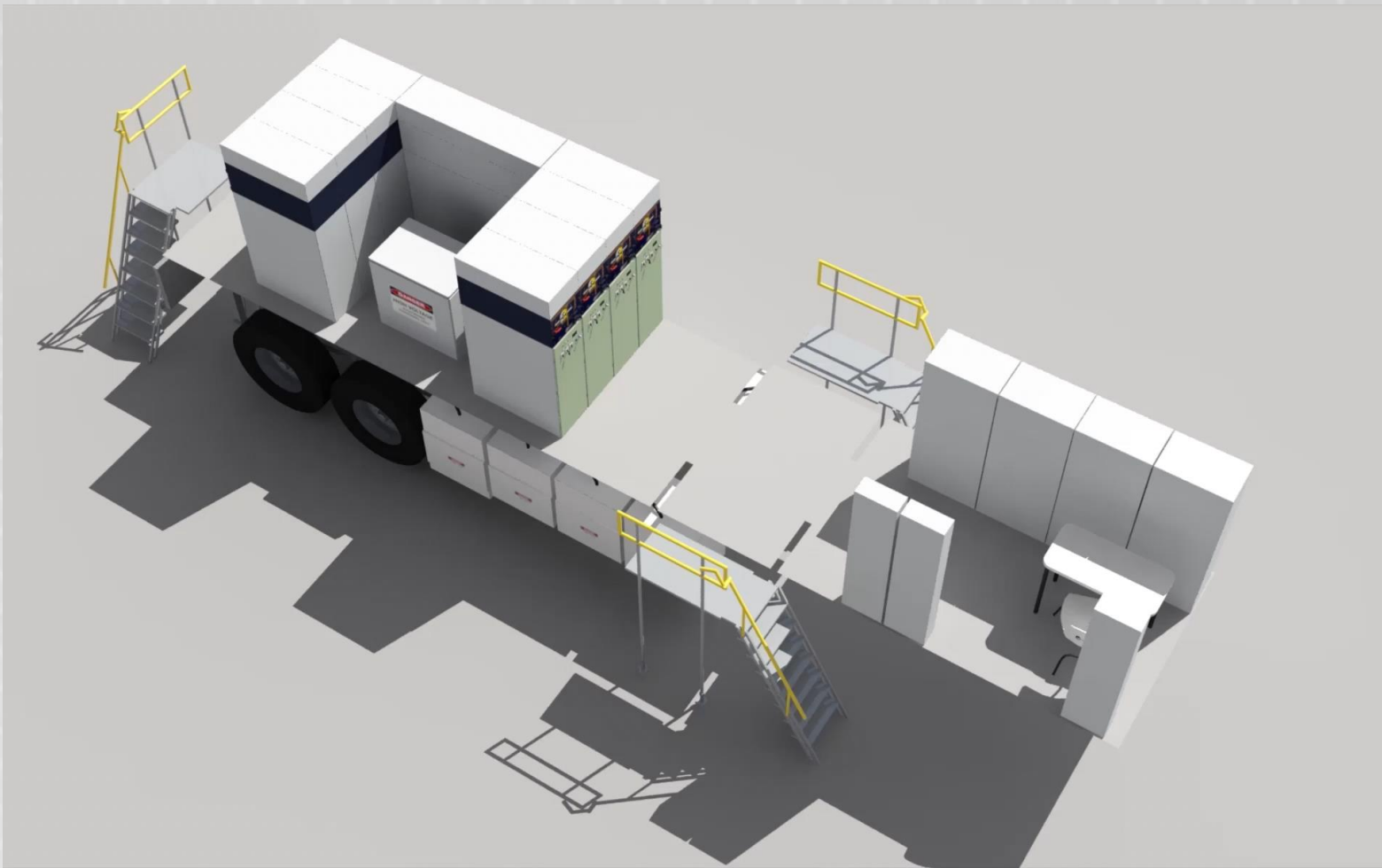
Clip from training movie – “Removing a Loadbuster”



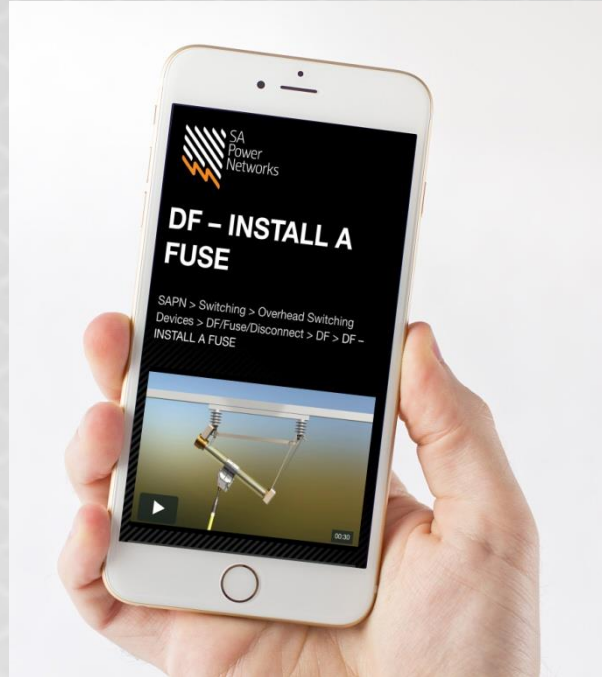
Clip from training movie – “Opening and Closing a ganged Load Switch”



Clip from training movie – “Setting Earth Fault on Noja RC10”



Clip from training movie – “Introduction to the Mobile Switchboard”



Summary

- Animation is great for equipment that is either too expensive or too dangerous to take out of commission for training
- Can improve reaction time to fault rectification and reduce unnecessary errors.
- New technology means latest version resources like these can be made available on any device



Keeping Safe

